

1 2 3 4 5 6

A

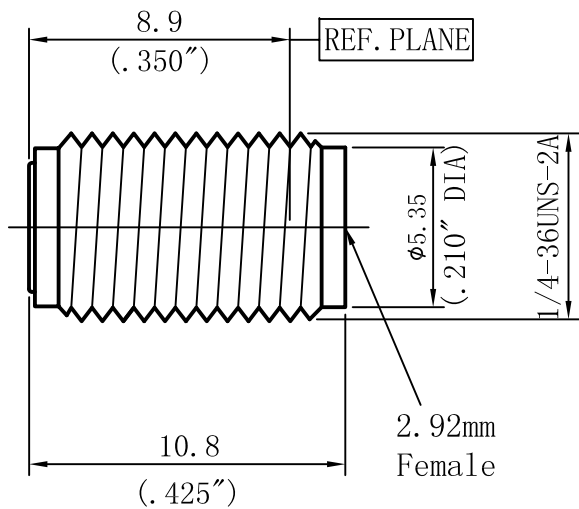
A

B

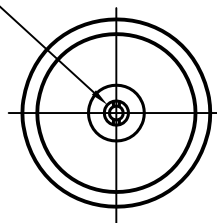
B

C

C



SOCKET TO ACCEPT $\phi 0.30(.012)$ PIN
2(.079) MAX DEPTH



Performance Features:

Nominal Impedance: 50 Ω
Frequency Range: DC-40GHz
VSWR: DC-40GHz.... 1.15:1 (Max)

Materials/Finishes:

Housing: SU303F
Passivated
Center Contact: Beryllium Copper
Gold Plated
Insulators: PEI



4th Floor, West Unit,
Incubation Building 1
Guanghua Lu, Nanjing
TEL: 025-84304950
FAX: 025-84304959
WWW.ALLWINTER.COM

DIRECTION OF VIEW



UNIT

mm

TITLE

2.92mm Connector

PROPRIETARY INFORMATION. THE INFORMATION WITHIN THIS DRAWING IS PROPRIETARY AND SHALL NOT BE USED OR DISCLOSED WITHOUT PRIOR WRITTEN PERMISSION FROM ALLWIN TECHNOLOGY.

DRAWN: Xin Gong
CHECKED: Haimin Zhang
APPR.: Gang Cao

DWG NO.

D360S12Y02

UNLESS OTHERWISE SPECIFIED
1. REMOVE ALL BEARS, BREAK ALL CORNERS, SHARP EDGES 0.05 R MAX
2. LINEARITY TOLERANCES ± 0.1 , ANGLE TOLERANCES $\pm 1^\circ$
3. DIAMETERS ON COMMON CENTERS TO BE CONCENTRIC WITHIN 0.1
4. ALL DIMENSIONS ARE AFTER PLATING, SURFACE FINISHED

OUTLINE DRAWING

LTR	DESCRIPTION	DATE	APPR.	DO NOT SCALE DRAWING	SIZE A4_h	SCALE 1:1	REV. V2.1	SHEET 1/1
-----	-------------	------	-------	----------------------	-----------	-----------	-----------	-----------

1 2 5 6