

1

2

3

4

5

6

A

B

C

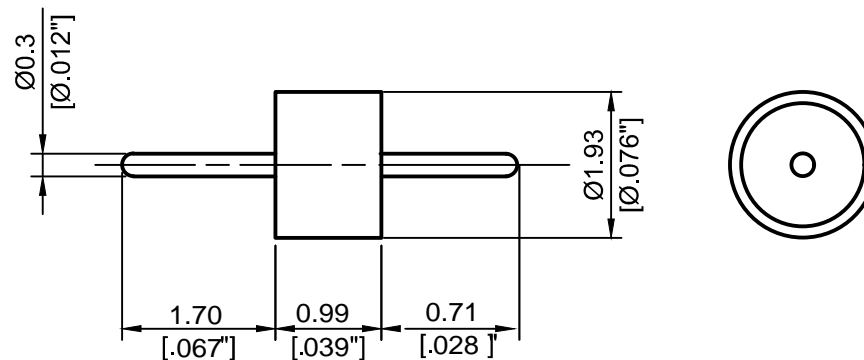
D

A


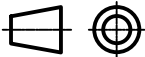
B

C

D



- 1. Pin extensions are $\pm 0.005''$
- 2. Nominal Impedance: 50Ω
- 3. Frequency Range: DC-46GHz
- 4. $R1 \leq 1.1013 \times 10^{-3} \text{ Pa} \cdot \text{cm}^3/\text{s He}$
- 5. Temperature range: $-55 \sim 400^\circ\text{C}$

 <p>ALLWIN TECHNOLOGY</p>		<p>4th Floor, West Unit, Incubation Building 1 Guanghua Lu, Nanjing TEL: 025-84304950 FAX: 025-84304959 WWW.ALLWINTEK.COM</p>		<p>DIRECTION OF VIEW</p> 		<p>UNIT</p> <p>mm</p>		<p>TITLE</p> <p>GLASS BEAD</p>	
<p>PROPRIETARY INFORMATION: THE INFORMATION WITHIN THIS DRAWING IS PROPRIETARY AND SHALL NOT BE USED OR DISCLOSED WITHOUT PRIOR WRITTEN PERMISSION FROM ALLWIN TECHNOLOGY.</p>				<p>DRAWN Haimin Zhang</p>		<p>DWG NO.</p>			
				<p>CHECKED Shaoqin Du</p>		<p>AL-301771</p>			
				<p>APPR. Dong Wu</p>					
				<p>UNLESS OTHERWISE SPECIFIED: 1. REMOVE ALL BURRS, BREAK ALL CORNERS, SHARP EDGES 0.05 R MAX 2. LINEARITY TOLERANCES ± 0.2, ANGLE TOLERANCES $\pm 1^\circ$ 3. DIAMETERS ON CONNOR. CENTERS TO BE CONCENTRIC WITHIN 0.1 4. ALL DIMENSIONS ARE AFTER PLATING, SURFACE FINISHED</p>		<p>OUTLINE DRAWING</p>			
<p>LTR</p>		<p>DESCRIPTION</p>		<p>DATE</p>		<p>APPR.</p>		<p>DO NOT SCALE DRAWING</p>	
								<p>SIZE A4 a</p>	
								<p>SCALE 10:1</p>	
								<p>REV. V2.0</p>	
								<p>SHEET 1/1</p>	

1

2

5

6