

1

2

3

4

5

6

A

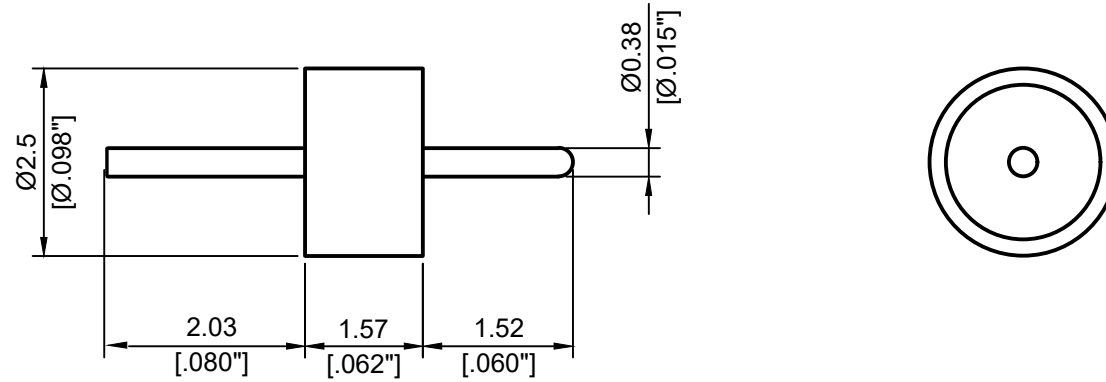
A

B



B

C

C



- 1. Pin extensions are $\pm 0.005''$
- 2. Nominal Impedance: 50Ω
- 3. Frequency Range: DC-28GHz
- 4. $R1 \leq 1.1013 \times 10^{-3} \text{ Pa} \cdot \text{cm}^3/\text{s He}$
- 5. Temperature range: $-55 \sim 400^\circ\text{C}$

 <p>4th Floor, West Unit, Incubation Building 1 Guanghua Lu, Nanjing TEL: 025-84304950 FAX: 025-84304959 WWW.ALLWINTEK.COM</p>		DIRECTION OF VIEW 		UNIT mm		TITLE GLASS BEAD			
PROPRIETARY INFORMATION: THE INFORMATION WHIN THIS DRAWING IS PROPRIETARY AND SHALL NOT BE USED OR DISCLOSED WITHOUT PRIOR WRITTEN PERMISSION FROM ALLWIN TECHNOLOGY.				DRAWN Haimin Zhang CHECKED Shaoqin Du APPR. Dong Wu		DWG NO. AL-381520			
<small>UNLESS OTHERWISE SPECIFIED 1. REMOVE ALL BERRS, BREAK ALL CORNERS, SHARP EDGES 0.05 R MAX 2. LINEARITY TOLERANCES ± 0.2, ANGLE TOLERANCES $\pm 1^\circ$ 3. DIAMETERS ON COMMON CENTERS TO BE CONCENTRIC WITHIN 0.1 4. ALL DIMENSIONS ARE AFTER PLATING, SURFACE FINISHED</small>				OUTLINE DRAWING					
LTR	DESCRIPTION	DATE	APPR.	DO NOT SCALE DRAWING		SIZE A4 a	SCALE 10:1	REV. V2.0	SHEET 1/1

1

2

5

6

D

D